

**FLOOR PLAN**

SCALE: 1/4" = 1'-0"

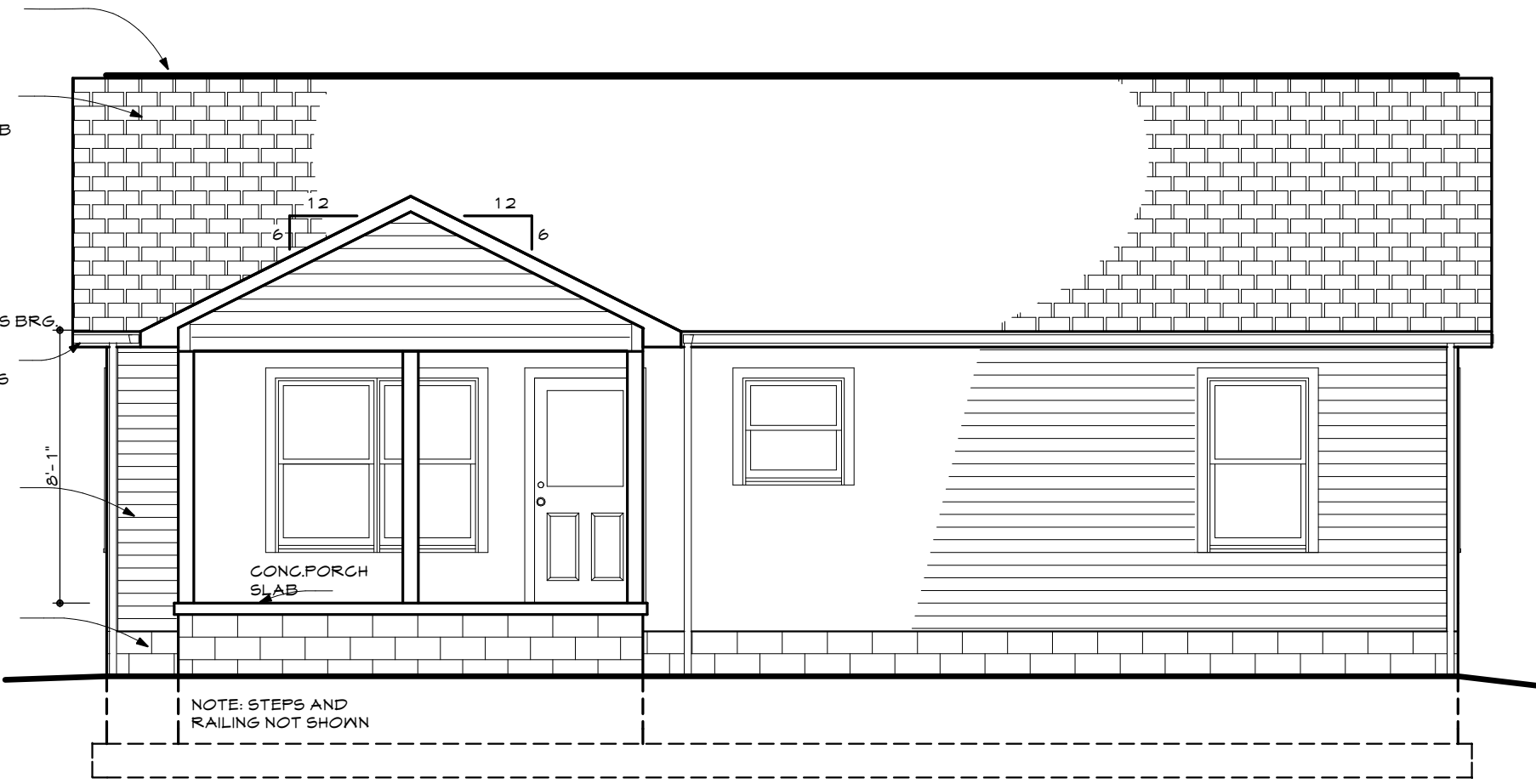
CONT. NAILABLE RIDGE VENT

25 YR. FIBERGLAS SHINGLES OVER 15# FELT OVER 5/8" OSB ON PREFAB WD. TRUSSES 24" O/C

TRUSS BRG.  
ALUM. SOFFIT, FASCIA, GUTTER & DOWNSPOUTS

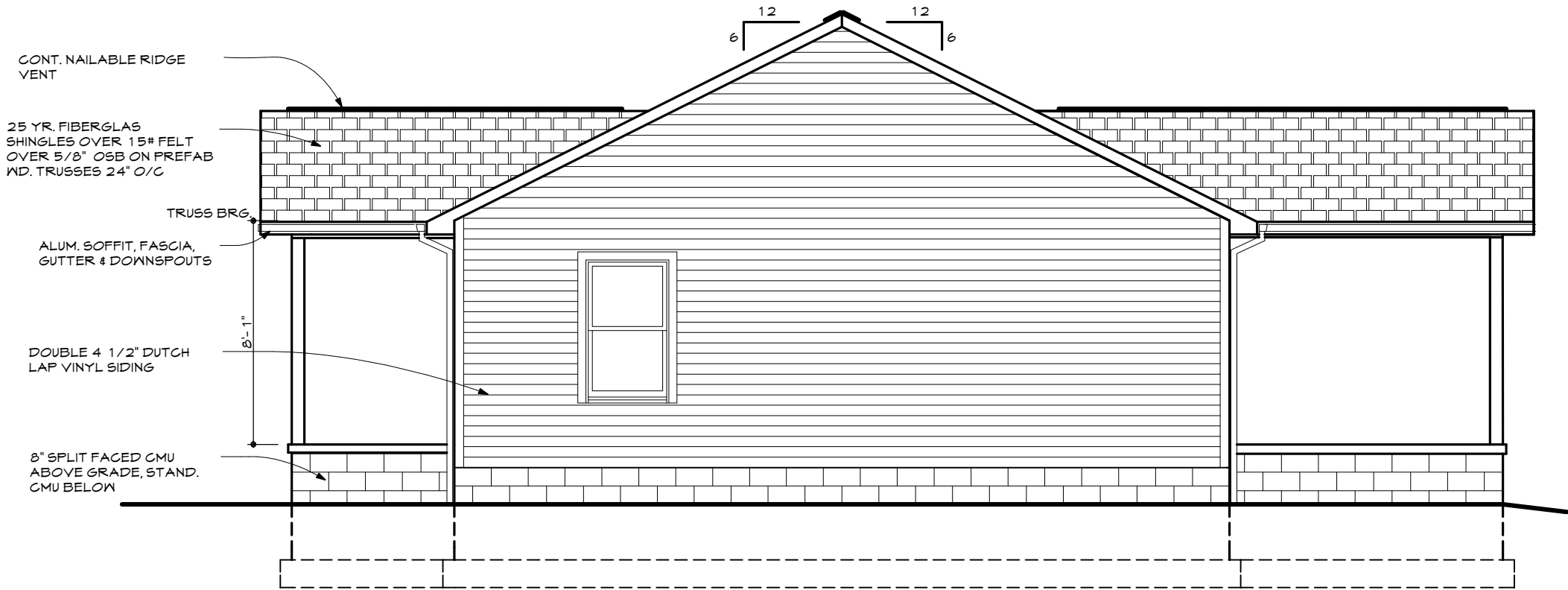
DOUBLE 4 1/2" DUTCH LAP VINYL SIDING

8" SPLIT FACED CMU ABOVE GRADE, STAND. CMU BELOW



# REAR ELEVATION

SCALE: 1/4" = 1'-0



**LEFT ELEVATION**

SCALE: 1/4" = 1'-0"

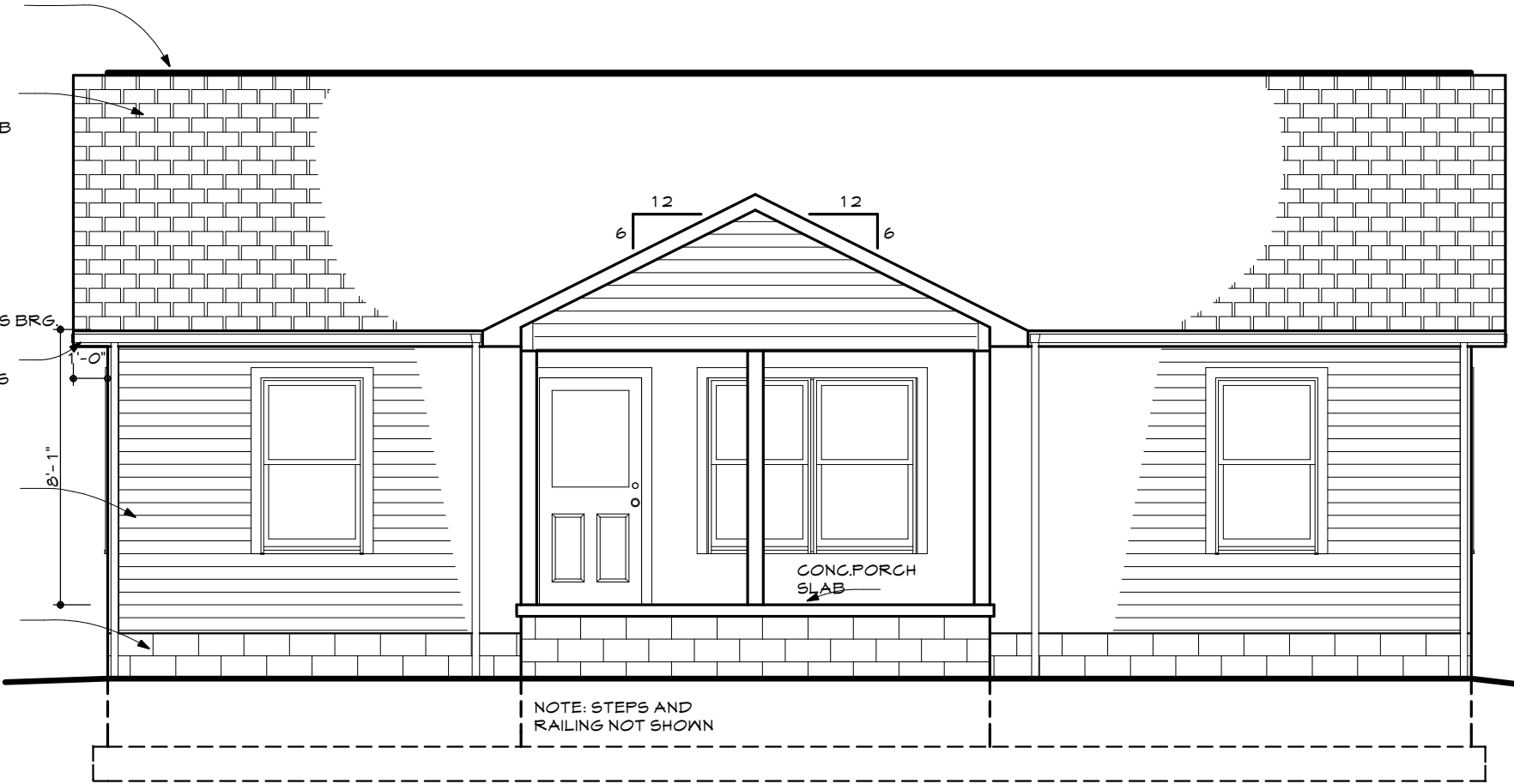
CONT. NAILABLE RIDGE VENT

25 YR. FIBERGLAS SHINGLES OVER 15# FELT OVER 5/8" OSB ON PREFAB WD. TRUSSES 24" O/C

TRUSS BRG.  
ALUM. SOFFIT, FASCIA, GUTTER & DOWNSPOUTS

DOUBLE 4 1/2" DUTCH LAP VINYL SIDING

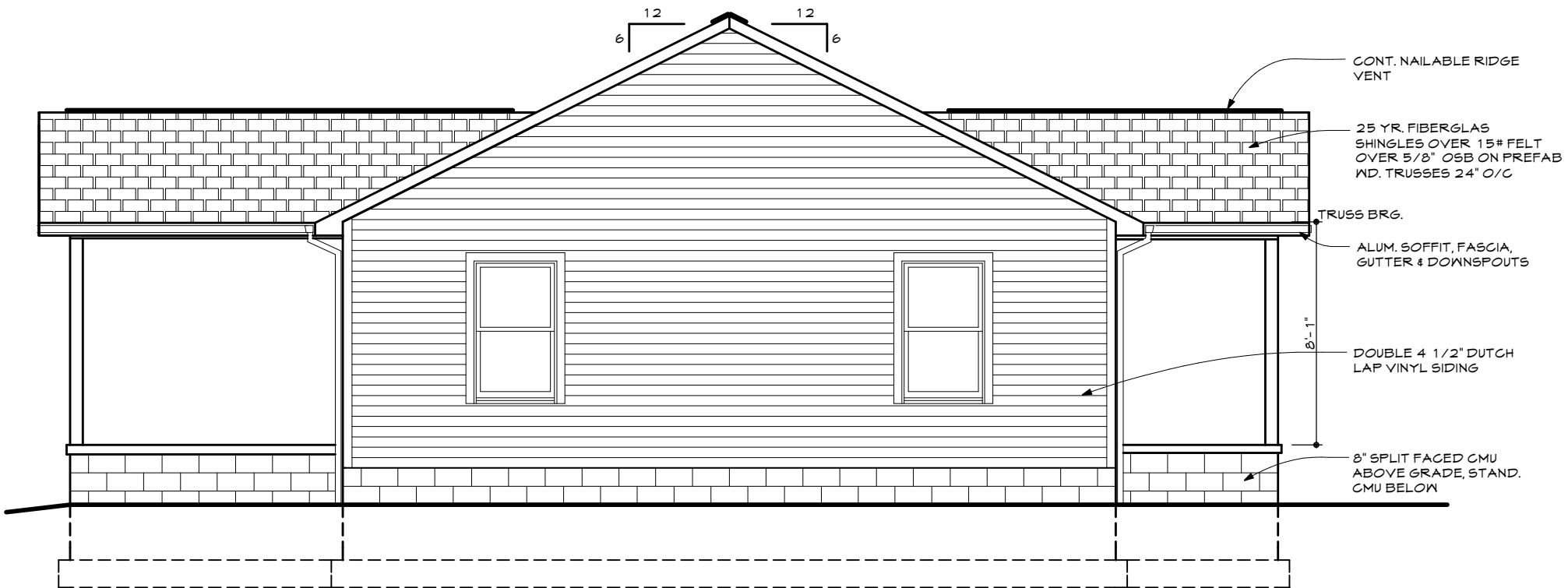
8" SPLIT FACED CMU ABOVE GRADE, STAND. CMU BELOW



NOTE: STEPS AND RAILING NOT SHOWN

# FRONT ELEVATION

SCALE: 1/4" = 1'-0



**RIGHT ELEVATION**

SCALE: 1/4" = 1'-0